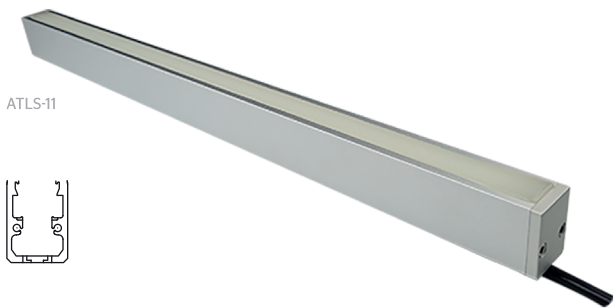


# Atecpool LED Strip IP68

## Linear Lighting Fixture

### Atecpool Water Proof Linear Lighting Fixture - ATLS-11

With the combination of IP68 LED neon strips and robust aluminum housing, the ATLS series is an inspirational linear lighting fixture designed for extreme exterior environmental conditions. Unlike common linear fixtures, this series is completely waterproof and flexible in length combination with seamless joints, the maximum linear length can reach 2 meters. It is available in mono color, tunable white, RGB, RGBW, and even pixel chasing in SPI and DMX. With its advanced structure design, the installation is much easier than common outdoor lighting fixtures. ATLS series can be widely used for garden, landscape, stairs, wall grazing, orientation lighting, window reveal and underground.



### Atecpool Linear LED Fixture specifications

Model	ATLS-11
Dimension	HEIGHT: 37.5 mm / WIDTH: 27.6 mm / LENGTH: 262 mm to max 2012 mm
Beam angle	120°
Operating temp	-25°C - 55°C
Protection rate	IP68
Finish	Anodized Silver / Anodized Black / Painted White
Mounting	Surface mounted
Power feed	Female / Male Connector
Control	0-10V / 1-10V / DMX / DALI
Available color	Black / White / Silver

### Lighting Source for Linear Fixture

Model	ATLS-11	ATLS-11 RGB
Input Voltage	24V DC	24V DC
Power / m	10W	13W
Working mode	PWM CV	PWM CV
LED type	SMD3528	SMD5050
LED Qty / m	144 pcs	72 pcs
Available Colors	R/G/B/ 2200K - 6500K	RGB
Cutting Unit	12 LEDs	6 LEDs
Cutting Length	8.33 cm	8.33 cm
Max. Length Single Feed	32.8' / 10m	32.8' / 10m

### Length Availability List

Model	Fixture length	LED Strip	End Cap Dimension
	Metric	Metric	Metric
ATLS-11	262 mm	250 mm	6 mm x2
	512 mm	500 mm	
	1012 mm	1000 mm	
	1262 mm	1250 mm	
	1512 mm	1500 mm	
	2012 mm	2000 mm	

### Key applications

- Building facades
- Public spaces
- Wall grazing
- Window reveal
- Additional lighting
- Landscape lighting

### Key Features

- Continuous 10 meters
- Easy Installation
- Mono / RGB(W) Optional
- DMX Optional
- IP68

