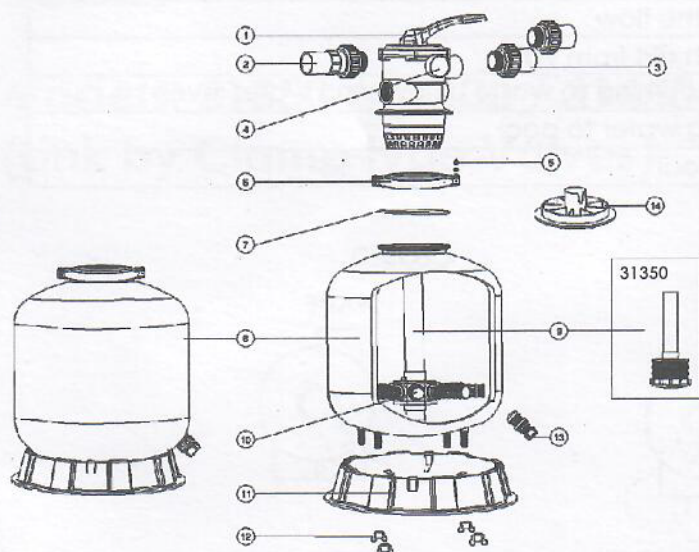


REPLACEMENT PARTS OF FILTER

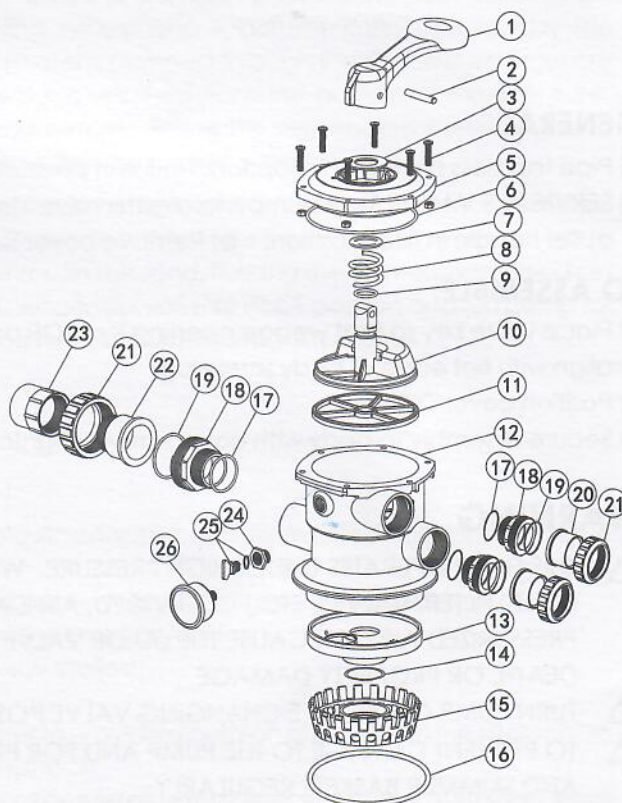


Notes: 10* 01172007 is laterals (115mm) for 31350-31450
10* 01172008 is laterals (126mm) for 31500-31700

Key No.	Part No.	Description	Qty
1	88280150B	6 Way 1.5" Valve with 1.5" union set x 3 and pressure gauge (Black)	1
2	89280101B	1.5" union with sight glass with O-ring (Black)	1
3	89280102B	1.5" union set with O-ring (Black)	2
4	06011029	Plastic Pressure Gauge with O-Ring	1
4	01111048	Connector for Pressure Gauge/Stopper	1
5	89010119	M6*50 Screws with Nut	2
6	89010101	Clamp Lock	2
7	02011134	O-Ring for Filter Neck	1
8	89010114	31350 Filter tank	1
8	89010113	31400 Filter tank	1
8	89010112	31450 Filter Tank	1
8	89010111	31500 Filter tank	1
8	89010110	31650 Filter tank	1
8	89010109	31700 Filter tank	1
9	89010106	31350 Lateral Assembly with Center Pipe	1
9	89010118	31400 Standpipe with hub	1
9	89010105	31450 Lateral Assembly with Center Pipe	1
9	89010104	31500 Lateral Assembly with Center Pipe	1
9	89010103	31650 Lateral Assembly with Center Pipe	1
9	89010102	31700 Standpipe with Hub	1
10	01172007	Laterals (115mm)	8
10	01172008	Laterals (126mm)	8
11	01111052	31350 Filter Base	1
11	01111059	16-21 inch Filter Base	1
11	01111062	21-28" Filter Base for 31500/ 31650/ 31700	1
12	01181052	Fastener for Filter Base	4
13	89010107	Water Drain Set	1
14	01015006	Sand Diverter (Black) for 1.5"	1

REPLACEMENT PARTS OF MULTIPORT VALVE

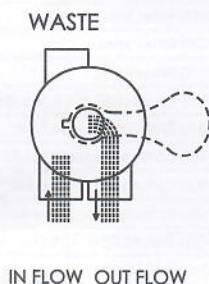
Key No.	Part No.	Product Description	Qty
1	01013003	Handle (Big)	1
2	03018008	Pin for Handle	1
3	01181001	Washer for Handle	1
4	89281203	M6*25 Screw with Nut for Camber Lid	6
4	89280107	M6*30 Screw with Nut for Standard Lid	6
5	01013004	1.5" Top Mount Valve Standard Lid (Black)	1
6	02011002	O-Ring for 1.5" Valve Lid	1
7	01181002	Washer for Spring	1
8	03014001	Spring for 1.5" Top Mount Valve	1
9	02011022	O-Ring for 1.5" Valve Rotor	2
10	01021001	1.5" Valve Rotor with O-Ring	1
11	02311002	Spider Gasket	1
12	01013007	1.5" Top Mount Valve Bottom Body Clamp (black)	1
13	01013011	1.5" Diffuser	1
14	02011001	O-Ring for Diffuser	1
15	01013012	1.5" Top Mount Valve Over Drain Diffuser	1
16	02011134	O-Ring	1
17	02020013	O-Ring for 1.5" Connector	3
18	01013015	1.5" Connector (black)	3
19	02011003	O-Ring for 1.5" Union	3
20	01171153	1.5" Union (A/E)	2
21	01013017	1.5" Union Nut (black)	3
22	01041002	1.5" Union With Sight Glass (short)	1
23	01172026	1.5" Union With Sight Glass Holder	1
24	01111048	Connector for pressure gauge/stopper	1
24	02011139	O-Ring	1
25	89021303	Drain Plug with O-ring	1
26	06011029	Oil Pressure Gauge With O-ring (40psi)	1



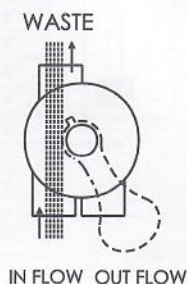
FUNCTIONS OF VALVE POSITIONS

Valve Position	Function
FILTER	Normal Filtration and Vacuuming
BACKWASH	Cleaning Filter by reversing the flow
RINSE	Used after backwash to flush dirt from valve
WASTE	By-passes filter, used for vacuuming to waste or lowering water level
RECIRCULATE	By-passes filter for circulating water to pool
CLOSED	Shuts off all flow to filter or pool

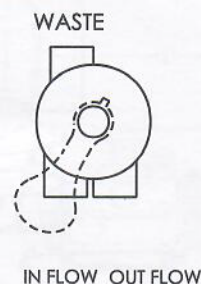
FILTER



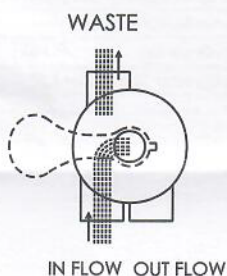
WASTE



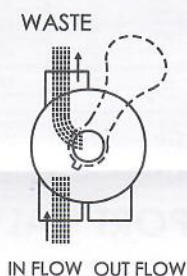
CLOSED



BACKWASH



RINSE



RECIRCULATE



GENERAL

- 1) Pipe tap boss provided for optional influent pressure gauge.
- 2) SERVICING VALVE(Stop pump,close gate valve in suction&discharge before proceeding):
 - a) Set handle in filter position.
 - b) Remove cover screws.
 - c) Lift cover and key assembly out.

TO ASSEMBLE:

- 1) Place valve key so that wedge opening is at TOP port (handle in Filter psn.). Flat edge of cover screw lug should align with flat edge of body screw lug.
- 2) Position cover O'Ring.
- 3) Secure assembly to body with cover screws. Tighten cover screws evenly and alternately. Do not over-tighten.

WARNING

- ⚠ THIS FILTER OPERATES UNDER HIGH PRESSURE. WHEN ANY PART OF THE CIRCULATING SYSTEM (e.g., CLAMP, PUMP, FILTER, VALVES, ETC.) IS SERVICED, AIR CAN ENTER THE SYSTEM AND BECOME PRESSURIZED. PRESSURIZED AIR CAN CAUSE THE LID OR VALVE TO BE BLOWN OFF WHICH CAN RESULT IN SEVERE INJURY, DEATH, OR PROPERTY DAMAGE.
- ⚠ TURN PUMP OFF BEFORE CHANGING VALVE POSITION.
- ⚠ TO PREVENT DAMAGE TO THE PUMP AND FOR PROPER OPERATION OF THE SYSTEM, CLEAN PUMP STRAINER AND SKIMMER BASKETS REGULARLY.
- ⚠ DO NOT UNSCREW SCREWS OF FLANGE CLAMP WHILE PUMP IS RUNNING.