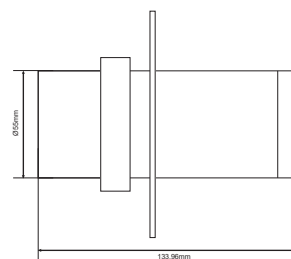
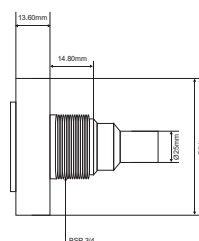


# Atecpool EVA LED Spa Lighting

## Atecpool EVA Q2 & B1 LED Spa Lighting

High-quality LED solution for therapy pools and spas. Atecpool EVA LED lighting models demonstrably meet the international safety standards for underwater lighting IEC EN 60598-2-18. All EVA Q2 and B1 LED light supply includes mono driver (power box Q2 / B1 mono) for fixed colour and RGBW driver (power box Q2 / B1 RGBW) for multi colour with a cable length of 10 meters.



Atecpool EVA Q2

Atecpool EVA B1

Model	EVA Q2 Fixed Colour	EVA B1 Fixed Colour	EVA Q2 RGBW Multi Colour	EVA B1 RGBW Multi Colour
Code	71773	71777	71775	71779
Type of Light	IP68 LED light	IP68 LED Spotlight	IP68 LED light	IP68 LED Spotlight
Max. Energy consumption system	10W	10W	10W Constant Output (10% tolerance) - IPC	10W Constant Output (10% tolerance) - IPC
Colour Temperatures	Light colour to be determined through connection of wires, options: White, blue, sky blue (light blue), Mediterranean blue (green blue), green, red, purple, magenta, yellow, etc.		Multi-coloured light: <ul style="list-style-type: none"> <li>• RGBW Red / Green / Blue / Daylight white (6500K)</li> <li>• RGBWW Red / Green / Blue / Warm white (2700K)</li> </ul>	
Max. Water Temp.	40°C			
Max. Installation depth	25 m			
Diameter	Ø 54 mm (hole size recessed)	Ø 80 mm (front ring)	Ø 54 mm (hole size recessed)	Ø 80 mm (front ring)
Depth Luminaire	55.5 mm	134 mm	55.5 mm	134 mm
Thread (surface mounted)	3/4" BSP	2" BSP	3/4" BSP	2" BSP
Cable Length Luminaire	10m (7x0.5 mm <sup>2</sup> )			
Safety Standard Compliance	IEC EN 60598-2-18			
Driver input/output	100-240 VAC / 24VDC			
Driving Technology	1-10VDC (dimming)		DMX 512 (colour mode, scenes, dimming, etc.)	
Protection Rating power box	IP65			
Protections power supply	Short circuit, overload, overvoltage, SELV equiv., Class 2 output, double insulation			
Max. cable length	100 m (7x4 mm <sup>2</sup> )		100m (7x4 mm <sup>2</sup> )	
Working temperature	-20°C to +40°C			
Light output at 6500K	Comparable to 100W Halogen			



Easy Colour Picker



Multi-angle light beam



International Safety Tested IEC EN 60598-2-18



Fast Return on Investment



No loss of LED capacity in RGBW

## Light distribution curve Q2 B1 6500K white

