

# Ornamental Water Features

## Nozzle & Accessories



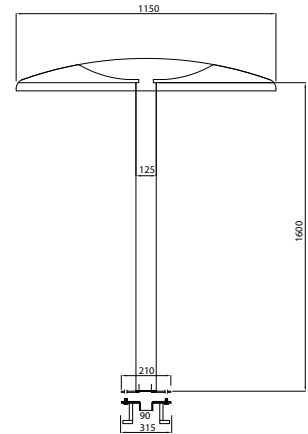
### Mushroom Umbrella water feature

Base of umbrella made in AISI 316 and top canopy in polyester fiberglass with a polished finish (colour selection of top canopy upon choice). Mushroom water feature made of two parts: the base and the canopy. The base height will be determined by the diameter of the canopy. Our standard model base and canopy as given, special size upon request.

#### Specifications

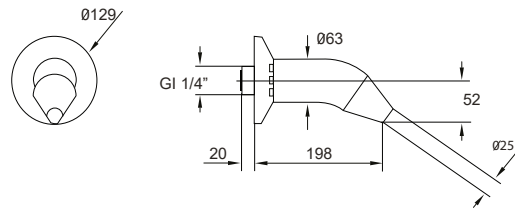
- Anchor included
- Connection female 2 1/2"
- Water flow: 34 m<sup>3</sup>/h
- Recommended pump: 2.2 kW

Code	Description	Weight (kg)
012997	Mushroom Waterfall w/ canopy polyester	40



### Circular Nozzle

AISI 316 stainless steel. Female connection of 1 1/4". Recommended pump 0.55 kW

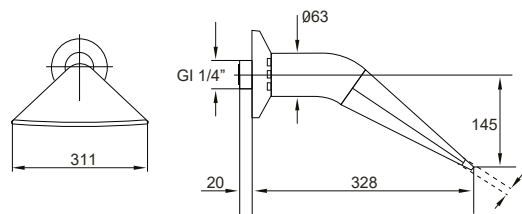


Code	Flow rate (m <sup>3</sup> /h)	Weight (kg)	Volume (m <sup>3</sup> )
AISI 316			
14200034	12	0.8	0.005



### Flat Nozzle

AISI 316 stainless steel. Female connection of 1 1/4". Recommended pump 0.75 kW



Code	Flow rate (m <sup>3</sup> /h)	Weight (kg)	Volume (m <sup>3</sup> )
AISI 316			
14200035	20	2.10	0.04