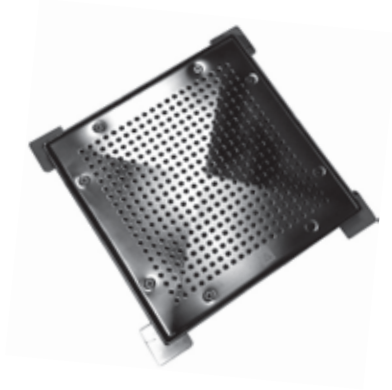


# Pool Fittings

## Anti-Suction Frames and Grates

### Frame and Grate Stainless Steel

Square Frame and grate in polished Stainless steel AISI 316 for concrete pools. Available in four standard sizes, other sizes can be made upon request.



Code	Description	Flow Rate (m <sup>3</sup> /h)	Weight (kg)	Size (mm)	Volume (m <sup>3</sup> )
10528901	SS Frame & Grate 250 x 250	27	1.5	250 x 250	0.0033
10528121	SS Frame & Grate 300 x 300	43	2.2	300 x 300	0.0041
10528181	SS Frame & Grate 400 x 400	83	4	400 x 400	0.0059
10528182	SS Frame & Grate 500 x 500	136	4.5	500 x 500	0.0100

### Anti-Vortex Frame and Grate AISI 316

Made of AISI 316 stainless with anti-vortex grille. Supplied with grille fixing screws. Special sizes on request.



Code	Description	Flow Rate (m <sup>3</sup> /h)	Weight (kg)	Size (mm)	Volume (m <sup>3</sup> )
10528902	SS Frame & Grate AV 250 x 250	24	1.5	250 x 250	0.0033
10528130	SS Frame & Grate AV 300 x 300	41	2.2	300 x 300	0.0041
10528140	SS Frame & Grate AV 400 x 400	79	4	400 x 400	0.0059
10528150	SS Frame & Grate AV 500 x 500	128	4.5	500 x 500	0.0100

### Anti-Suction Frame and Grate AISI 316

Anti-Suction, curved surface design. VGB compliant. Made of AISI 316 stainless with curved grille. Supplied with grille fixing screws. Available in three different sizes.



Code	Description	Flow Rate (m <sup>3</sup> /h)	Weight (kg)	Size (mm)	Volume (m <sup>3</sup> )
10528122	Anti-Suction SS Frame & Grate 300 x 300	41	5.5	300 x 300	0.0041
10528183	Anti-Suction SS Frame & Grate 400 x 400	80	7.2	400 x 400	0.0059
10528185	Anti-Suction SS Frame & Grate 500 x 500	132	8.5	500 x 500	0.0100