

Rainbow Fountain

LED Foam Effect Nozzle



LED Foam Effect Nozzle

Color Cascade Bubbler nozzle with LED provides vivid mix of color or elegant white. Perfect showcasing for water features at entrance and for step water features. Low voltage and minimal water flow requirement make them an ideal energy efficient additions to waterscapes.

LED Foam Effect Nozzle Specification

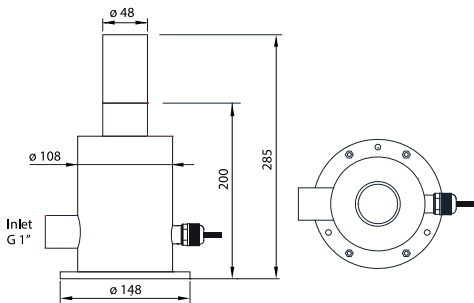
- Located 50mm under water level
- Light type: LED RGB / white light
- Rated voltage: 24 VDC
- Rated power 3W
- Weight 3.6kg
- Power cable for LED light 3m STW 18AWG
- Stainless steel 316 construction with Acrylic nozzle

Example of application



Code	BSP. connection	Flow/Head	SPRAY HEIGHT (m)				
			0,15	0,25	0,35	0,5	0,6
ZFL 35-40	1"	LPM	40	50	58	65	72
		Head in mtr	1,5	2,1	2,9	3,7	4,6

Dimensions



ZFL 35-40

ZFL 35-40 LED Foam Nozzle

Characteristics	ZFL 35-40
Rated voltage	24VDC
LED rated power	3W
Power Cable	3m STW 18AWG
Weight	3.6kg
Material	Stainless Steel 316 with Acrylic Nozzle

